



BIRLA SCHOOL, PILANI



**A PREMIER INSTITUTION
OF
BIRLA EDUCATION TRUST**



**Cultivating Courteous,
Independent and
Creative Thinkers
SINCE 1901**

OUR SAGACIOUS LUMINARIES

"You are here laying a foundation for the future of India, and you are performing a very sacred duty. All that I want to say is, don't be contented with what you have achieved. The law of nature is either you move forward, or you have to move backward. Therefore, if you want to move forward, You have to constantly work hard with determination and devotion..."



SYT. GHANSHYAM DAS BIRLA



SYT. S.K. BIRLA

PRESIDENT, BIRLA EDUCATION TRUST

"In 1901, a village- pathshala was established for teaching the village children and also the young generation of my grandfather and his brothers. In 1929, it transformed itself into Birla Education Trust, with some schools for boys and girls. In all our school, we have the finest living standards and personalized pastoral care."

"Birla School , Pilani is a world class school with the most modern facilities and amenities; it offers the finest living condition and personalized pastoral care. The school focuses on constructivism in learning, independence in thinking and universal rhyme."



MAJ. GEN (RETD). S.S. NAIR AVSM
DIRECTOR, BIRLA EDUCATION TRUST

PRINCIPAL'S MESSAGE



It is a great honour and privilege to be the Principal of a 121-year-old institution - Birla School, Pilani. The heritage gives strong roots and a highly experienced and dedicated team of staff with progressive outlook provides wings to our students to fly.

The committed teachers ensure that the students achieve high standards of academic scholarship, veracity, and leadership, equipping them with tools to be responsible global citizens in an innocuous and therapeutic environment.

The latest trends of teaching methodologies along with traditional values are indispensable for the holistic development of students' personality, which our BSP family believes in.

Teamwork is the hallmark of BIRLA SCHOOL, PILANI. A committed and supportive management, dedicated teachers, and caring, and cooperative parents balance on foot to create a child-centric school. It is natural to find in this ambience, the intensive use of a variety of thinking activities, strategies, and group dynamics so that the classrooms become alive. I am very sure through collaborative efforts; we can achieve what 'Our Mission' states.

In the pursuit of excellence, I appreciate our parents' fraternity for supporting the school in every aspect. I urge students to always be modest, humble, and disciplined, while being ready to expand the horizons of their knowledge and skills by dreaming big and working hard.

Dhirendra Singh

VISION

Birla School, Pilani aims to be a trailblazing institution that nurtures globally responsible citizens with roots in Indian values.

MISSION

Birla School, Pilani, is dedicated to shaping students into impactful global citizens who embrace diversity, lead with empathy, and uphold strong ethical values, ensuring they thrive as both accomplished individuals and compassionate human beings.

OUR MOTTO

:तमसो मा ज्योतिर्गमयः
FROM DARKNESS, TO LIGHT!

INFLUENTIAL NAVDURGA POWER

बुद्धिं देहि यशो देहि कवित्वं देहि देहि मे ।
मूढत्वं च हरेद्देवि त्राहि मां शरणागतम् ॥

With Navdurga shakti, our Success Mantras constantly being imbibed in academics, sports, extra-curricular and within the dorms, we ensure that the students imbibe these essential 9 qualities, which help students identify their strengths to overcome challenges and create Excellence.

9 SUCCESS MANTRAS

1. FOCUS
2. TIME MANAGEMENT
3. RESILIENCE
4. ADAPTATION
5. RESPONSIBILITY
6. DECISION MAKING
7. EMPATHY
8. APPRECIATION
9. ENDURANCE



TRADITION OF EXCELLENCE

ACADEMIC ACHIEVERS



BIRLA SCHOOL, PILANI

A CENTURY OLD HERITAGE CBSE SCHOOL

CO-EDUCATIONAL



96%

DAKSH JAIN



96%

MS ANAMIKA BHASKAR



94.0%

HERAMB KATTAYAN



93.0%

ISHANI MAAN



93.0%

PRIYANSHU



92.2%

HARSH



92.0%

RAAJ VERMA



91.8%

HIMANSHU SHARMA



92.0%

SAMRIDHI



92.2%

AADIDEV GHILDYAL



90%

MUSKAN



91.8%

HARSHIT AGARWAL



91.8%

CHIRAG BANSAL



91.8%

UDDHAV VIJAYARGIYA



91%

ABHISHEK KUMAR



91%

GAURAV SINGH



90.6%

PRIYANK GAUR



90.4%

BANSURI CHOUDHARY



90.2%

NITISHA



90%

VIGYA

CONGRATULATIONS
FOR EXCELLENCE IN CBSE
CLASS XII (AISSE) 2023



BIRLA SCHOOL, PILANI

A CENTURY OLD HERITAGE CBSE SCHOOL

CO-EDUCATIONAL



97.6%

PRINCE SAINI



97.4%

ANKUSH SHARMA



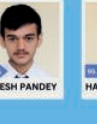
95.6%

ARUSH SAINI



95.6%

NISHANT



95.6%

JAYESH PANDEY



95.2%

HARSHITA PAYAL



94.2%

NAVSHA KAUSHIK



93.8%

DAKSH CHOUDHARY



93.4%

NUPUR CHOUDHARY



93.4%

ASHUTOSH



93.2%

DIVYANSHU



93.2%

LOKESH



93.2%

GAURAV SIHAG



93.2%

NAWAJ KUMAR MECHU



93.0%

ADITYA



92.8%

SOURAV KUMAR



92.6%

YASHVARDHAN NARAYAN

CONGRATULATIONS
FOR EXCELLENCE IN CBSE
CLASS X (AISSE) 2023



90.8%

ADITYARAJ SINGH SAWAT



90.8%

MAYANK GAJRAJ



90.8%

KRISH



90.2%

AKSHAR MAHESHWARI



90.2%

CHITRESH JALAN



90%

UTKARSH

LAURELS BY OUR STUDENTS

OUR EDUCATION SYSTEM, ENTAILS THE BEST OF PEDAGOGIES AND AIMS TO NURTURE YOUNG MINDS INTO ALL ROUNDERS.



SOARING WITH PRIDE

OUR KEY FACTORS

OUR SOLIDITY

SOARING WITH PRIDE SINCE 1901

TWIN SHARING ACCOMMODATION

NUTRITIOUS FOOD

PERSONALISED PASTORAL CARE

STABILITY OF FACULTY

**STUDENT DIVERSITY SPANNING OVER
29 STATES AND OTHER COUNTRIES.**

DEDICATED STAFF

AFFORDABLE FEES

24X7 SURVEILLANCE

**MULTIFACETED APPROACH TO
CULTURAL DIVERSITY**

POLLUTION FREE CAMPUS

**SYMBIOTIC RELATIONSHIP WITH
BITS-PILANI**

SCHOOL IS COMMITTED TO UNFOLDING THE TRUE POTENTIAL OF EVERY STUDENT.

JOY OF EXPERIENTIAL LEARNING

OUR EXTENDED CLASSROOM WITH CONTINUED SUPPORT OF BIRLA SCIENCE CENTRE, BIRLA NATUROPATHY CENTRE, ECO-PARK, AND MANY MORE, HELPS STUDENTS FOR EXPERIENTIAL LEARNING AND PROJECT BASED LEARNING.



OUR LABS WITH WORLD CLASS AMENITIES OPENS A MULTIVERSE OF KNOWLEDGE FOR STUDENTS TO OBSERVE, EXPERIMENT AND COMPREHEND THROUGH EXPERIENTIAL LEARNING.



SCHOOL OFFERS WELL EQUIPPED COMPUTER LABS AND HARDWARE LAB. RECENTLY THE SCHOOL FORMED ITS FIRST DCIM CLUB.



SMART CLASSES SMART CLASSES CONVERT AN ORDINARY CLASSROOM INTO AN INTERACTIVE LEARNING EXPERIENCE USING LATEST TECHNIQUES LIKE SMART BOARD AND DIGITAL LEARNING.



LIBRARY – TODAY A READER, TOMORROW A LEADER!!



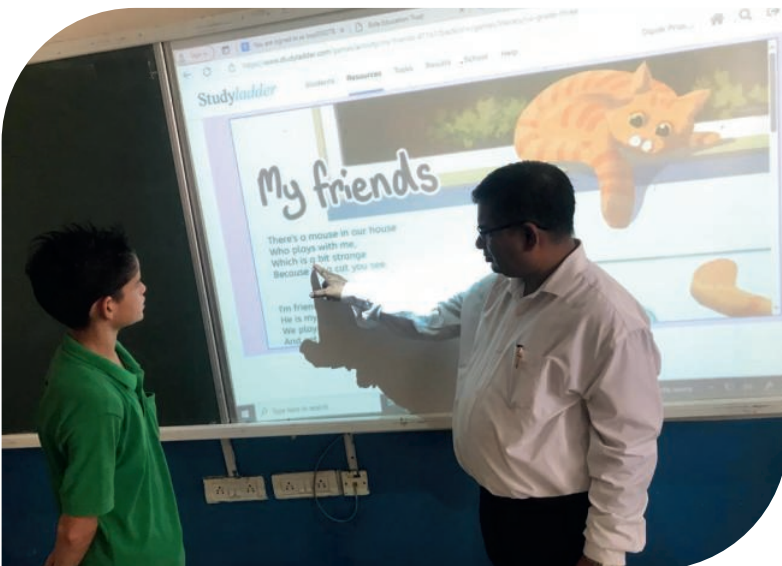
A CAREER COUNSELLING CELL EXISTS IN THE SCHOOL TO GUIDE THE STUDENTS IN THE SELECTION OF STUDY COURSES AND CAREER AFTER THE SCHOOL. WE ALSO ORGANISE CAREER COUNSELLING SESSIONS BY RENOWNED EXPERTS.



CAREER COUNSELLING-

" WHERE HE WILL ALWAYS BE READY FOR FUTURE "

SPECIAL EDUCATION - "IF I CAN'T LEARN THE WAY YOU TEACH THEN TEACH ME THE WAY I CAN"



OUR SPECIAL EDUCATOR SUPPORTS OUR STUDENTS WITH LEARNING DIFFICULTIES SO AS TO HELP THEM COPE WITH THE RIGOURS OF THE CURRICULUM.



REMEDIAL CLASSES- HELPING YOU TO RISE

HOSTEL- WARMTH OF A HOME

SHAPING BSPIANs' JOURNEY AS THEY GROW INTO CONFIDENT INDIVIDUALS AND GLOBAL CITIZENS.

BIRLA SCHOOL, PILANI IS TRADITIONALLY A BOARDING SCHOOL AND CAN BOAST OF THE BEST BOARDING FACILITIES IN THE REGION. THE HOSTEL FUNCTIONS UNDER THE ABLE GUIDANCE OF A CHIEF WARDEN, HOUSE MASTERS AND ASSISTANT HOUSE MASTERS. IT IS EQUIPPED WITH ALL THE MODERN FACILITIES LIKE A SPACIOUS DINING HALL, SKATING RINK, FOOTBALL AND CRICKET FIELDS AND BASKETBALL COURT, SWIMMING POOL, HORSE RIDING.



PASTORAL CARE- A CARE THAT SHINES YOU..



DINING HALL



ARADHNA HALL



The Aradhana Programme is organized once a week to enable the students to imbibe the cardinal virtues in life. Every effort is made for their moral and spiritual development.

TOURS TREKS

Outdoor adventure and educational trips are an integral part of boarding school life. These trips not only inculcate mental strength and moral values amongst the children but also help them in developing social skills and comradeship.

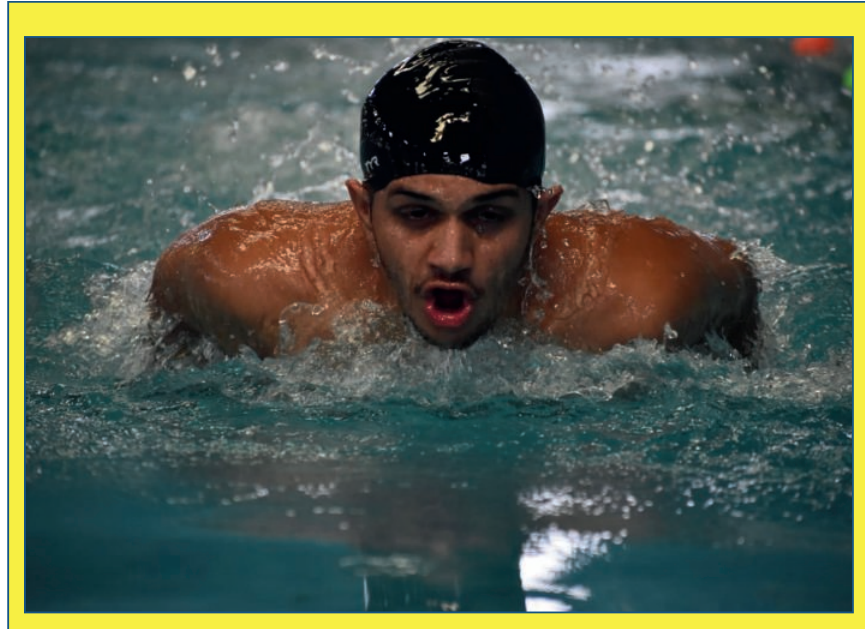


NATIONAL CADET CORPS {NCC} THE SCHOOL HAS TROOPS FROM ALL THE THREE WINGS OF N.C.C. AND THE STUDENTS CAN JOIN THEM FROM CLASS VIII ONWARDS.

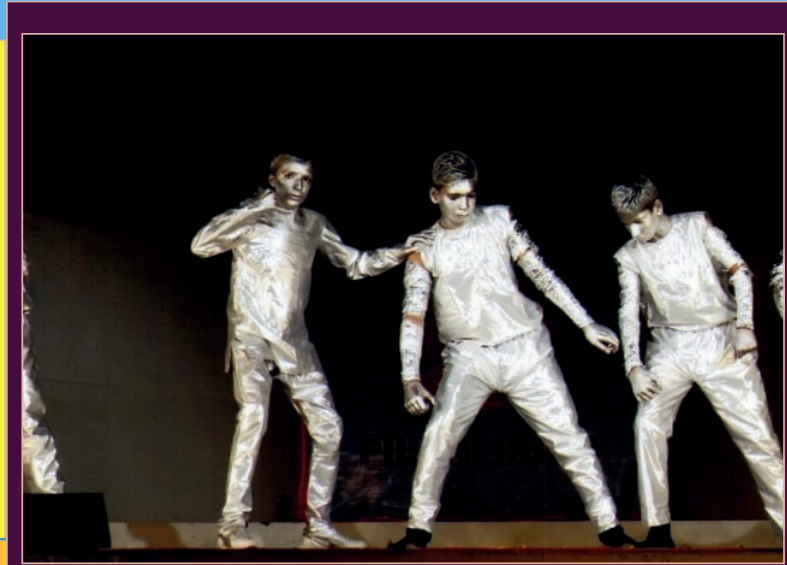


GAMES & SPORTS ACTIVITIES

WE RECOGNIZES THE NEED FOR AND IMPORTANCE OF GAMES AND SPORTS ACTIVITIES IN A STUDENTS LIFE. SCHOOL PROVIDES A VARIED RANGE OF GAMES AND SPORTS FACILITIES TO DEVELOP A SOUND MIND AND A FIT BODY FOR ALL ITS STUDENTS.



THE ANNUAL EXTRAVAGANZA
THE SCHOOL IS ABUZZ WITH A MYRIAD OF ACTIVITIES



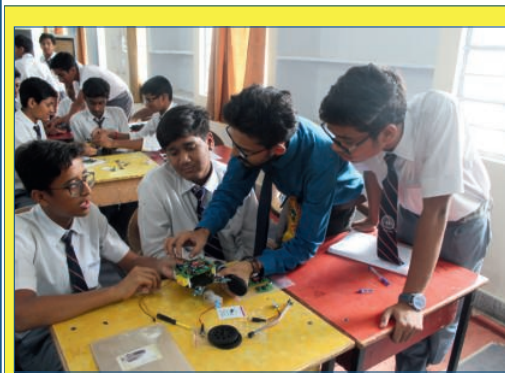
REGISTRATIONS AND ADMISSIONS

1. THE REGISTRATION FOR ADMISSION CAN ALSO BE DONE ONLINE THROUGH THE SCHOOL WEBSITE - WWW.BIRLASCHOOLPILANI.EDU.IN
2. ALL THE DETAILS FILLED IN THE REGISTRATION FORM MUST BE CORRECT.
3. PASSPORT SIZE PHOTOGRAPH (200 X 300 PIX)
4. THE PARENTS CAN GET THE REGISTRATION DONE ONLINE WITH AN AMOUNT OF RS.1700/ WHICH CAN BE REMITTED ELECTRONICALLY THROUGH THE PAYMENT GATEWAY.
5. THE REGISTRATION AMOUNT IS NON-REFUNDABLE.

ELIGIBILITY FOR ADMISSION

FOR REGISTRATION, AGE OF CANDIDATE AS ON 1ST APRIL OF THE ACADEMIC YEAR SHOULD BE AS PER THE AGE CHART. AGE STIPULATION IS STRICTLY OBSERVED AND THE PARENT IS RESPONSIBLE FOR COMPLIANCE AS REQUIRED BY THE CHART GIVEN HEREIN BELOW. PLEASE NOTE THAT REGISTRATION OF A STUDENT SEEKING ADMISSION AND HIS APPEARANCE AT THE ADMISSION TEST, DO NOT AUTOMATICALLY ENTITLE THE STUDENT FOR ADMISSION.

CLASS	V	VI	VII	VIII	IX
AGE	10+	11+	12+	13+	14+



ADMISSION PROCEDURE

1. ONCE THE REGISTRATION PROCESS IS COMPLETE, THE PARENTS WILL BE INTIMATED ABOUT THE SCHEDULE FOR ONLINE APTITUDE ASSESSMENT.
2. THE STUDENTS OF CLASSES V TO IX WILL HAVE TO APPEAR FOR THE APTITUDE ASSESSMENT IN: ENGLISH, HINDI, MATHEMATICS & LIFE SKILLS.
3. THE MODE OF APTITUDE ASSESSMENT WILL BE ONLINE
4. ONCE THE CHILD HAS CLEARED THE APTITUDE ASSESSMENT THE PRINCIPAL WILL INTERACT WITH THE APPLICANT AND THE PARENTS TO CONFIRM THE ADMISSION.
5. ONCE THE ADMISSION IS APPROVED BY THE PRINCIPAL, CONFIRMATION LETTER ALONG WITH THE ADMISSION FORMS AND FEE STRUCTURE WILL BE SENT ON YOUR REGISTERED EMAIL ID.
6. YOU ARE REQUESTED TO SEND BACK ALL THE DULY FILLED FORMS ALONG WITH THE PAYMENT DETAILS WITHIN FOUR WORKING DAYS AFTER RECEIVING THE CONFIRMATION LETTER AT ADMISSION@BIRLASCHOOLPILANI.EDU.IN
7. THE ADMISSION OF THE CHILD WILL BE DEEMED CONFIRMED ONLY AFTER THE FIRST INSTALMENT OF THE FEE RECEIVED FOR THE RESPECTIVE SESSION.
8. THE BIRLA SCHOOL, PILANI RESERVES THE RIGHTS TO CANCEL THE ADMISSION IF ANY DISCREPANCY IS FOUND IN THE DOCUMENTS SUBMITTED.

SCHOOL FEE & PAYMENT

FEE MUST BE PAID THROUGH THE PAYMENT GATEWAY OPTION AVAILABLE ON THE SCHOOL WEBSITE – WWW.BIRLASCHOOLPILANI.EDU.IN

OUR WAIVEOFFS---OUR DISCOUNTS

1. **SIBLING DISCOUNT 10% OF (TOTAL TUITION FEE + BOARDING FEE)**
2. **10% WAIVE OFF IN TUITION FEES TO ALL NEW ADMISSION FROM DEFENCE.**

DOCUMENTS REQUIRED FOR ADMISSION

- AADHAR CARD (PHOTOCOPY)- OF THE CHILD AND BOTH THE PARENTS.
- THREE PASSPORT SIZE LATEST PHOTOGRAPHS OF THE CHILD AND BOTH THE PARENTS. • TWO PASSPORT SIZE LATEST PHOTOGRAPHS OF THE GUARDIANS (IF APPLICABLE)
- DATE OF BIRTH CERTIFICATE AND MARKSHEET OF PREVIOUS CLASS (PHOTOCOPY)
- ORIGINAL MIGRATION CERTIFICATE (ONLY FOR NON CBSE STUDENT SEEKING ADMISSION IN GRADE XI)
- ORIGINAL TRANSFER CERTIFICATE FROM THE LAST SCHOOL ATTENDED. DULY FILLED INDEMNITY BOND DOWNLOAD FROM THE SCHOOL WEBSITE.

NOTE:

1. THE SCHOOL SHALL HAVE THE SOLE DISCRETION TO SEEK ANY FURTHER DOCUMENTS (IF REQUIRED).
2. ALL THE REQUIRED DOCUMENTS MUST BE SUBMITTED WITHIN 15 DAYS AFTER JOINING THE SCHOOL.

SUBJECT COMBINATION OFFERED IN CLASSES IX AND X

1. ENGLISH COMMUNICATIVE 2. HINDI COURSE A / SANSKRIT 3. MATHEMATICS
4. SCIENCE 5. SOCIAL SCIENCE 6. ARTIFICIAL INTELLIGENCE 7. WORK EXPERIENCE
8. MUSIC 9. FINE ARTS.

SUBJECT COMBINATION OFFERED IN CLASS XI

SCIENCE STREAM (ENGINEERING)

1. ENGLISH CORE 2. PHYSICS 3. CHEMISTRY 4. MATHEMATICS 5. COMPUTER
SCIENCE / ECONOMICS / IP / BIOTECHNOLOGY 6. PHYSICAL EDUCATION / MUSIC / AI

SCIENCE STREAM (MEDICAL)

1. ENGLISH CORE 2. PHYSICS 3. CHEMISTRY 4. INFORMATICS PRACTICES 5.
BIOLOGY / MATHEMATICS 6. PHYSICAL EDUCATION / MUSIC / AI

COMMERCE STREAM

1. ENGLISH CORE 2. ACCOUNTANCY 3. BUSINESS STUDIES 4. ECONOMICS 5. APPLIED
MATHEMATICS / ENTREPRENEURSHIP 6. PHYSICAL EDUCATION / MUSIC

A STUDENT HAS AN OPPORTUNITY TO CHOOSE FROM A VARIETY OF ACTIVITIES PROVIDED BY THE SCHOOL FROM
LOWER CLASSES IN THE FORM OF WORK EXPERIENCE AND PROJECTS IN THE SENIOR CLASSES.

FLY HIGH THEY EXPLORE, AND WE GIVE THEM WINGS

OUR ALUMNI ARE MAKING THEIR MARK IN THE ARTISTIC, CREATIVE, POLITICAL, SCIENTIFIC AND BUSINESS SPHERES IN INDIA AND AROUND THE GLOBE.



MR. MAHESHWAR DAYAL,
IPSDIG HARYANA POLICE,
CHANDIGARH
(1988 BATCH)



PRATAP SINGH RATHI MANAGING
DIRECTOR, ACE GROUP,
DELHI (1993 BATCH)



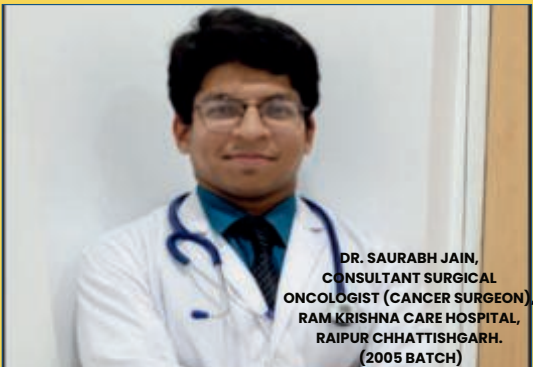
DR. NIKHIL PRASUN, DIRECTOR
NEUROSCIENCES, AMRI HOSPITAL,
KOLKATA
(1993 BATCH)



Mr. Bibhavy Ranjan,
Senior System Software Engineer-
Nvidia Graphics Pvt Ltd
2006 Batch



MR. SUNIL MUKERJEE, DIRECTOR
PUBLIC RELATIONS,
M.D. UNIVERSITY,
ROHTAK (1987 BATCH)



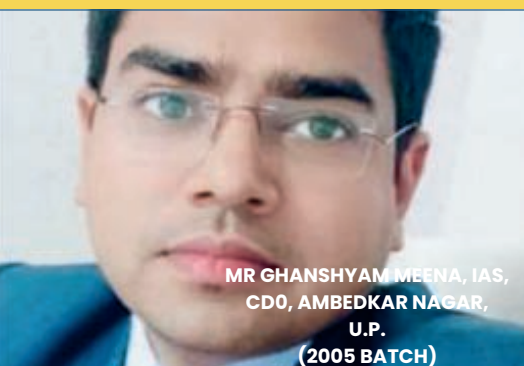
DR. SAURABH JAIN,
CONSULTANT SURGICAL
ONCOLOGIST (CANCER SURGEON),
RAM KRISHNA CARE HOSPITAL,
RAIPUR CHHATTISGARH.
(2005 BATCH)



DR. RAVI SHANKAR, DIRECTOR (NEUROSURGERY),
INSTITUTE OF NEUROSCIENCES, MEDANTA
HOSPITAL, LUCKNOW (1994 BATCH)



Mr. Satyam Mohan, IDEBS
IAS Allied Services
Asst. Director General (ADG)
DCDE Ministry of Defence,
Government of India,
2007 Batch



MR GHANSHYAM MEENA, IAS,
CDO, AMBEDKAR NAGAR,
U.P.
(2005 BATCH)



MUKESH SHARMA, CHAIRMAN,
PROMETHEUS SCHOOL, NOIDA FOUNDER
CEO, OA INFOTECH PVT. LTD.
(1999 BATCH)



GHANSHYAM MEENA, IAS
MUNICIPAL COMMISSIONER FIRUZABAD.
(2005 BATCH)



Rachit Raj IAS
Director, Social Welfare,
Govt of Gujarat
2007 Batch